

Colorado Freight Plan



Appendices

January 2022



COLORADO
Department of Transportation

APPENDIX A – CRITICAL RURAL AND CRITICAL URBAN FREIGHT CORRIDORS

CDOT, and the state’s Metropolitan Planning Organizations (MPOs), are responsible for identifying and designating Critical Rural Freight Corridors (CRFC) and Critical Urban Freight Corridors (CUFC) in accordance with the FAST Act. These roads join the Primary Highway Freight System (PHFS) and other Interstate highways to comprise the National Highway Freight Network (NHFN). By focusing on improvements to these critical corridors, CDOT will direct resources toward improving the safety, efficiency, and reliability of Colorado’s intermodal and highway freight systems.

In consultation with the MPOs, Engineering Regions, and Transportation Planning Region planning partners, CDOT developed criteria and guidelines to identify Colorado’s CRFC and CUFC routes. The consultation process and identification guidelines include:

- Analysis of location criteria and corridor segments related to established project needs identified in the Colorado Freight Plan, State Freight and Passenger Rail Plan, and CDOT’s Development Program;
- Screening for consistency with identified Colorado Freight Corridors;
- Identification of smaller corridor segments aligned with areas of project need, rather than entire corridors;
- Review and input from MPOs and Engineering Regions; and,
- Review and input by members of the Colorado Freight Advisory Council, and Statewide Transportation Advisory Committee.

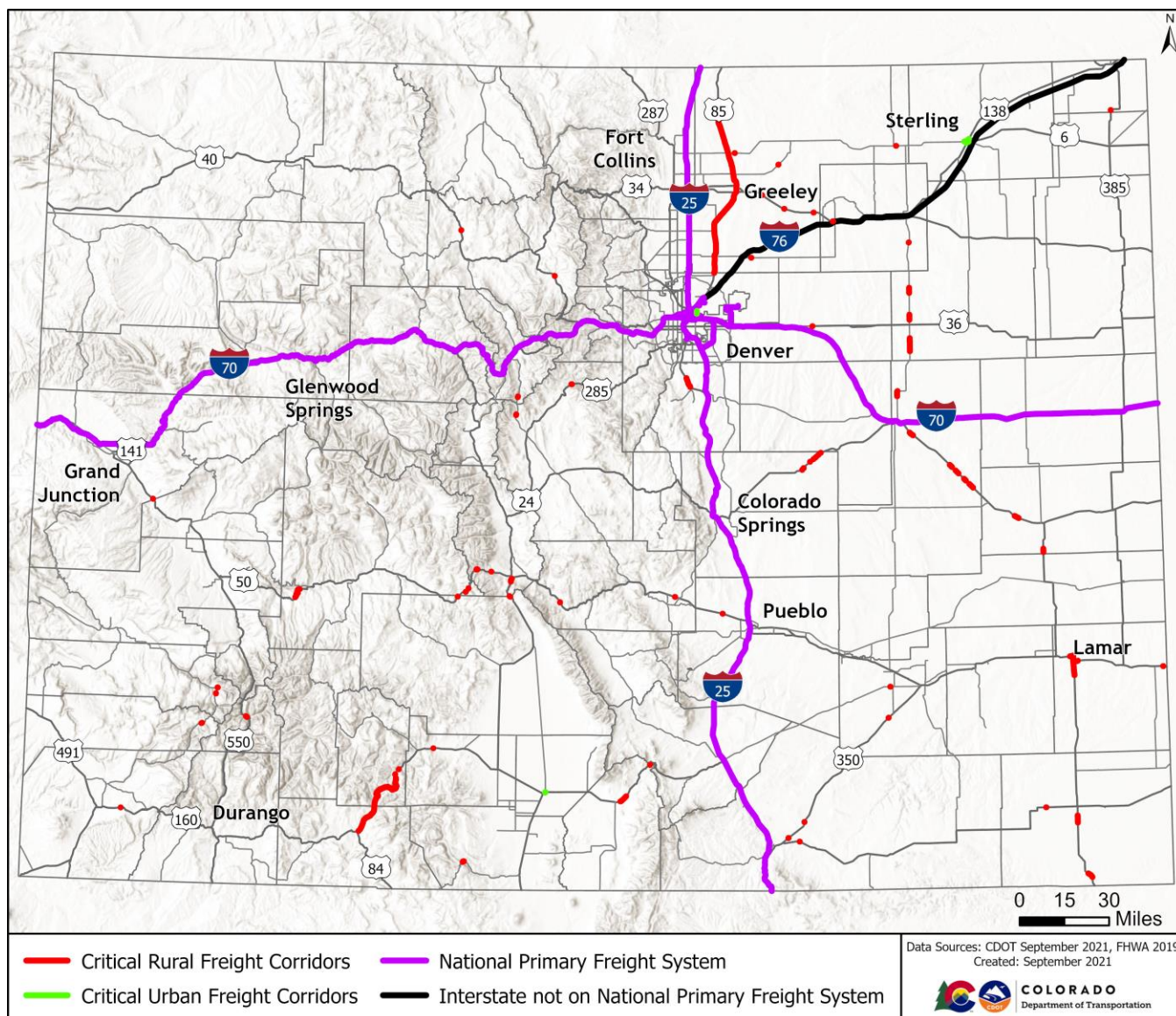
A CRFC or CUFC must be certified by the Federal Highway Administration (FHWA) before NHFP funds may be authorized for a freight project. CDOT will continually evaluate and update corridor designations in Colorado based on identified needs. This designation and de-designation, process will take place on an ongoing basis with stakeholders and the FHWA.

The following total corridor mileage has been currently designated in Colorado:

- *Critical Rural Freight Corridors.* Colorado has been allotted 160.69 miles to designate as CRFC. **As of January 2022, a total of 133.95 miles have been designated.**
- *Critical Urban Freight Corridors.* Colorado has been allotted 80.35 miles to designate as CUFC. **As of January 2022, a total of 5.23 miles have been designated.**

These segments meet guidance and criteria from the FHWA for the selection of CRFC and CUFC and are shown in the following map and tables.

Map of National Highway Freight Network and Critical Urban and Rural Freight Corridors, January 2022



Designated Critical Urban Freight Corridors and Critical Rural Freight Corridors, January 2022

Critical Urban Freight Corridors					
Project	Route	MP Beg	MP End	Extent	FHWA Corridor Identification
SH 14: Sterling “S” Curve	State Highway 14 (014C)	236.0	236.9	0.92	J, K
SH 14: Sterling “S” Curve	U.S. Route 138 (138A)	0.0	1.0	1.00	J, K
SH 14: Sterling “S” Curve	U.S. Route 138 (138Z)	0.0	0.6	0.61	J, K
SH 14: Sterling “S” Curve	U.S. Route 6 (006J)	404.0	405.0	1.00	J, K
SH 14: Sterling “S” Curve	U.S. Route 6 (006Z)	0.0	0.6	0.60	J, K
US 160 and SH 17 Intersection Improvement Project	State Highway 17 (017B)	69.1	69.1	0.01	K
US 160 and SH 17 Intersection Improvement Project	U.S. Route 160 (160A)	233.8	234.0	0.19	K
US 85 Vasquez: I-270 to 62nd Avenue Interchange	U.S. Route 6 (006H)	292.9	293.8	0.90	H, J, K
Total CUFC Mileage				5.23	

Critical Rural Freight Corridors

Project	Route	MP Beg	MP End	Extent (mi)	FHWA Corridor Identification
Port-of-Entry Mobile Site Pullout Improvements	State Highway 10 (010A)	61.50	61.60	0.10	G
Port-of-Entry Mobile Site Pullout Improvements	State Highway 14 (014C)	212.60	212.70	0.10	C, D, F, G
Mountain Pass Chain Up Stations and Safety Needs	State Highway 145 (145A)	54.70	55.00	0.30	D, G
Mountain Pass Chain Up Stations and Safety Needs	State Highway 145 (145A)	68.90	69.00	0.10	D, G
Mountain Pass Chain Up Stations and Safety Needs	State Highway 145 (145A)	71.60	71.70	0.10	D, G
Mountain Pass Chain Up Stations and Safety Needs	State Highway 17 (017A)	16.80	17.40	0.60	D, G
Port-of-Entry Mobile Site Pullout Improvements	State Highway 392 (392B)	131.50	131.60	0.10	G
SH 9: North of Hoosier Pass Chain Station	State Highway 9 (009C)	72.10	72.40	0.30	D, G
SH 9: South of Hoosier Pass Chain Station	State Highway 9 (009C)	79.90	80.20	0.30	D, G
Mountain Pass Chain Up Stations and Safety Needs	U.S. Route 160 (160A)	176.60	176.70	0.10	D, G
Mountain Pass Chain Up Stations and Safety Needs	U.S. Route 160 (160A)	260.00	262.60	2.60	D, G
Mountain Pass Chain Up Stations and Safety Needs	U.S. Route 160 (160A)	276.70	276.80	0.10	D, G
Truck Parking - Region 5	U.S. Route 160 (160A)	46.50	46.50	0.00	D, G
Truck Parking - Region 5	U.S. Route 160 (160A)	191.40	191.40	0.00	D, G
Wolf Creek Fiber West & ITS	U.S. Route 160 (160A)	144.50	158.00	13.50	D, G
U.S. 160: Wolf Creek Safety Improvements	U.S. Route 160 (160A)	158.00	173.00	15.00	C, D, F, G
Mountain Pass Chain Up Stations and Safety Needs	U.S. Route 285 (285B)	118.90	119.30	0.40	D, G
Mountain Pass Chain Up Stations and Safety Needs	U.S. Route 285 (285B)	125.00	126.10	1.10	D, G
North Kenosha Pass Chain Station	U.S. Route 285 (285D)	207.80	208.00	0.20	D, G
US 287: Passing Lane South of Lamar	U.S. Route 287 (287A)	3.10	5.00	1.90	A, B, D, G
US 287: Passing Lane South of Lamar	U.S. Route 287 (287A)	23.30	25.70	2.40	A, B, D, G
US 287: Lamar Reliever Route	U.S. Route 287 (287A)	73.00	77.60	4.60	A, B, D, G
US 40/US 287: Passing Lanes	U.S. Route 287 (287B)	123.30	124.50	1.20	A, B, D, G
Port-of-Entry Mobile Site Pullout Improvements	U.S. Route 34 (034A)	148.40	148.50	0.10	D, G
Port-of-Entry Mobile Site Pullout Improvements	U.S. Route 36 (036D)	102.80	102.90	0.10	D, G
Port-of-Entry Mobile Site Pullout Improvements	U.S. Route 40 (040A)	173.50	173.60	0.10	D, G
Port-of-Entry Mobile Site Pullout Improvements	U.S. Route 40 (040A)	224.30	224.40	0.10	D, G
US 40/US 287: Passing Lanes	U.S. Route 40 (040H)	390.00	391.50	1.50	D, G
US 40/US 287: Passing Lanes	U.S. Route 40 (040H)	407.30	408.40	1.10	D, G
US 40/US 287: Passing Lanes	U.S. Route 40 (040H)	410.00	411.40	1.40	D, G
US 40/US 287: Passing Lanes	U.S. Route 40 (040H)	414.00	414.90	0.90	D, G
US 40/US 287: Passing Lanes	U.S. Route 40 (040H)	416.50	417.60	1.10	D, G
US 40/US 287: Passing Lanes	U.S. Route 40 (040H)	417.90	418.30	0.40	D, G
US 40/US 287: Passing Lanes	U.S. Route 40 (040H)	435.80	437.40	1.60	D, G
Mountain Pass Chain Up Stations and Safety Needs	U.S. Route 50 (050A)	190.10	190.20	0.10	D, G

Critical Rural Freight Corridors

Project	Route	MP Beg	MP End	Extent (mi)	FHWA Corridor Identification
Mountain Pass Chain Up Stations and Safety Needs	U.S. Route 50 (050A)	193.50	193.60	0.10	D, G
Mountain Pass Chain Up Stations and Safety Needs	U.S. Route 50 (050A)	195.50	195.60	0.10	D, G
Mountain Pass Chain Up Stations and Safety Needs	U.S. Route 50 (050A)	204.50	204.90	0.40	D, G
Mountain Pass Chain Up Stations and Safety Needs	U.S. Route 50 (050A)	209.70	209.80	0.10	D, G
Port-of-Entry Mobile Site Pullout Improvements	U.S. Route 50 (050A)	52.70	52.80	0.10	D, G
Port-of-Entry Mobile Site Pullout Improvements	U.S. Route 50 (050A)	288.20	288.30	0.10	D, G
Port-of-Entry Mobile Site Pullout Improvements	U.S. Route 50 (050A)	305.50	305.60	0.10	D, G
US 50: Little Blue Canyon	U.S. Route 50 (050A)	123.00	127.00	4.00	D, G
Port-of-Entry Mobile Site Pullout Improvements	U.S. Route 50 (050B)	466.30	466.40	0.10	A, B, D, G
US 287: Lamar Reliever Route	U.S. Route 50 (050B)	432.50	437.00	4.50	A, B, D, G
Mountain Pass Chain Up Stations and Safety Needs	U.S. Route 550 (550B)	71.40	71.90	0.50	D, G
U.S. 85: Louviers to Meadows Widening	U.S. Route 85 (085B)	191.20	194.40	3.20	D, G
US 85: Corridor Improvements	U.S. Route 85 (085C)	236.00	265.00	29.00	D, G
US 85: Corridor Improvements	U.S. Route 85 (085L)	265.00	291.00	26.00	D, G
SH 71 Climbing Lanes	State Highway 71 (071D)	110.95	112.70	1.75	A, D, G
SH 71 Climbing Lanes	State Highway 71 (071D)	129.10	131.55	2.45	A, D, G
SH 71 Climbing Lanes	State Highway 71 (071D)	131.75	133.50	1.75	A, D, G
SH 71 Climbing Lanes	State Highway 71 (071D)	139.65	141.40	1.75	A, D, G
SH 71 Climbing Lanes	State Highway 71 (071D)	148.70	150.45	1.75	A, D, G
US 34 Weather Cameras	U.S. Route 34 (034A)	122.00	122.10	0.10	B, D, G
US 34 Weather Cameras	U.S. Route 34 (034A)	131.00	131.10	0.10	B, D, G
US 34 Weather Cameras	U.S. Route 34 (034A)	141.00	141.10	0.10	B, D, G
Region 5 2022 Chain Station Improvements	U.S. Route 160 (160A)	174.20	174.30	0.10	D, G
Weigh-in-Motion Program and Safety Enhancements Pool	State Highway 50 (050B)	433.00	433.10	0.10	A, D, G
Weigh-in-Motion Program and Safety Enhancements Pool	State Highway 160 (160A)	35.30	35.40	0.10	A, D, G
Timber Structure Repairs on Truck Routes	U.S. Route 160 (160C)	453.86	453.96	0.10	A, B, D, G
Timber Structure Repairs on Truck Routes	U.S. Route 160 (160C)	356.32	356.42	0.10	A, B, D, G
Timber Structure Repairs on Truck Routes	U.S. Route 24 (024G)	340.91	341.01	0.10	A, B, D, G
Timber Structure Repairs on Truck Routes	U.S. Route 24 (024G)	344.73	344.83	0.10	A, B, D, G
Timber Structure Repairs on Truck Routes	U.S. Route 350 (350A)	56.90	57.00	0.10	A, B, D, G
Timber Structure Repairs on Truck Routes	U.S. Route 350 (350A)	57.26	57.36	0.10	A, B, D, G
Timber Structure Repairs on Truck Routes	U.S. Route 350 (350A)	10.30	10.40	0.10	A, B, D, G
Timber Structure Repairs on Truck Routes	State Highway 52 (052A)	32.61	32.71	0.10	A, B, D, G
Timber Structure Repairs on Truck Routes	U.S. Route 385 (385D)	291.54	291.64	0.10	A, B, D, G

Critical Rural Freight Corridors

Project	Route	MP Beg	MP End	Extent (mi)	FHWA Corridor Identification
Timber Structure Repairs on Truck Routes	U.S. Route 350 (350A)	2.55	2.65	0.10	A, B, D, G
Timber Structure Repairs on Truck Routes	State Highway 14 (014C)	155.60	155.70	0.10	A, B, D, G
Timber Structure Repairs on Truck Routes	State Highway 52 (052A)	32.61	32.71	0.10	A, B, D, G
Timber Structure Repairs on Truck Routes	State Highway 71 (071D)	165.70	165.80	0.10	A, B, D, G
Timber Structure Repairs on Truck Routes	U.S. Route 24 (024G)	341.66	341.76	0.10	A, B, D, G
Timber Structure Repairs on Truck Routes	U.S. Route 24 (024G)	346.20	346.30	0.10	A, B, D, G
Timber Structure Repairs on Truck Routes	U.S. Route 24 (024G)	346.97	347.07	0.10	A, B, D, G
Timber Structure Repairs on Truck Routes	U.S. Route 24 (024G)	347.42	347.52	0.10	A, B, D, G
Timber Structure Repairs on Truck Routes	U.S. Route 24 (024G)	348.37	348.47	0.10	A, B, D, G
Timber Structure Repairs on Truck Routes	U.S. Route 24 (024G)	349.40	349.50	0.10	A, B, D, G
Timber Structure Repairs on Truck Routes	U.S. Route 50 (050A)	238.78	238.88	0.10	A, B, D, G
Total CRFC Mileage				133.95	

APPENDIX B - FREIGHT INVESTMENT PLAN

FY 2016 – FY 2021 PROJECTS

Updated Colorado Freight Investment Plan, January 2022	
--	--

Project Description								
Funding Sources (\$ Millions)	FY16	FY17	FY18	FY19	FY20	FY21	Total	Total Project
FY2021 NHFP Projects								
SH 79 over I-70 Bridge Design							STIP Number: TBD	
CFP Emphasis Area: Freight Safety, Freight Mobility, Truck Parking							CY Prioritized: 2021	
The SH 79 over I-70 Bridge, which is a CDOT owned structure, is substandard and creates a bottleneck within the Town of Bennett as trucks attempt to access and exit Love’s Truck Stop and its parking area. This NHFP funding will be utilized to design a new bridge which includes shoulders and turn lanes in each direction. The Town of Bennett in coordination with the MPO is planning on using this design set of plans to pursue project construction funding via other funding or grant opportunities. This project is supported by the Colorado Freight Advisory Committee and the Transportation Commission.								
NHFP	\$0.00	\$0.00	\$0.00	\$0.00	\$0.00	\$1.60	\$1.60	
State Match (HUTF)	\$0.00	\$0.00	\$0.00	\$0.00	\$0.00	\$0.40	\$0.40	
Total	\$0.00	\$0.00	\$0.00	\$0.00	\$0.00	\$2.00		\$2.00
I-70 West Vail Pass Auxiliary Lanes Continuation							STIP Number: SIN7021	
CFP Emphasis Area: Freight Safety, Freight Mobility, Truck Parking							CY Prioritized: 2021	
Addition of a climbing lane in the uphill (eastbound) direction and addition of a deceleration lane in the downhill (westbound) direction of I-70 West Vail Pass. The project is a continuation of the FY2019 award to complete a hazmat structure within the deceleration lane and runaway truck ramp.								
NHFP	\$0.00	\$0.00	\$0.00	\$0.00	\$0.00	\$1.60	\$1.60	
State Match (HUTF)	\$0.00	\$0.00	\$0.00	\$0.00	\$0.00	\$0.40	\$0.40	
Total	\$0.00	\$0.00	\$0.00	\$0.00	\$0.00	\$2.00		\$2.00
Timber Structure Repairs on Truck Routes Pool							STIP Number: TBD	
CFP Emphasis Area: Freight Safety, Freight Mobility							CY Prioritized: 2021	
This funding pool advances improvements for this underfunded asset. This project focuses on the repair and structural reinforcement of timber structures that will improve load ratings allowing trucks to travel on these bridges and avoid a re-routing situation which will contribute to more efficient freight movement, operations and GHG emission reduction. To date 60 structures on freight corridors have been identified that will benefit from this type of repair. It is anticipated that up to 20 structures can be repaired in one year with FY 21 funds with the allotted manpower and funds.								
NHFP	\$0.00	\$0.00	\$0.00	\$0.00	\$0.00	\$1.60	\$1.60	
State Match (HUTF)	\$0.00	\$0.00	\$0.00	\$0.00	\$0.00	\$0.40	\$0.40	
Total	\$0.00	\$0.00	\$0.00	\$0.00	\$0.00	\$2.00		\$2.00

Weigh-in-Motion Program and Safety Enhancements Pool							STIP Number: TBD	
CFP Emphasis Area: Freight Safety, Freight Mobility							CY Prioritized: 2021	
This funding pool advances the improvements for this unfunded asset which does not have any other direct funding source. This project focuses on improvements to the Weigh-in-Motion (WIMS) assets located at the six Port of Entry (POE) stations. An inspection and analysis of WIM assets will prioritize and provide cost estimates for needed repairs/replacements. Funds remaining after the inspection and analysis will be used to repair/replace three to four WIM systems and enhance safety through low-cost improvements.								
NHFP	\$0.00	\$0.00	\$0.00	\$0.00	\$0.00	\$1.60	\$1.60	
State Match (HUTF)	\$0.00	\$0.00	\$0.00	\$0.00	\$0.00	\$0.40	\$0.40	
Total	\$0.00	\$0.00	\$0.00	\$0.00	\$0.00	\$2.00		\$2.00
Metro Area Chain Stations Pool							STIP Number: TDB	
CFP Emphasis Area: Freight Safety, Freight Mobility							CY Prioritized: 2021	
This funding pool advances the improvements for this unfunded asset which does not have any other direct funding source. This project focuses on chain stations nearer urbanized areas, where traffic volumes and lack of chain stations create hazardous conditions during weather events. The first locations are north and south of Monument Hill, an area that experienced 20 chain law events over the last three winters.								
NHFP	\$0.00	\$0.00	\$0.00	\$0.00	\$0.00	\$2.40	\$2.40	
State Match (HUTF)	\$0.00	\$0.00	\$0.00	\$0.00	\$0.00	\$0.40	\$0.60	
Total	\$0.00	\$0.00	\$0.00	\$0.00	\$0.00	\$3.00		\$3.00
I-70 EB Aux Lane and Truck Parking							STIP Number: SIN7022	
CFP Emphasis Area: Freight Safety, Freight Mobility, Truck Parking							CY Prioritized: 2021	
This project from Frisco to Silverthorne provides for the addition of an EB auxiliary lane, additional lane through the Silverthorne interchange, and an option single lane off ramp reducing undesirable maneuvering. Six truck parking spaces will be added to nine existing truck parking spaces at the scenic overlook, and wildlife fence will be installed to prevent deer/elk/moose hits								
NHFP	\$0.00	\$0.00	\$0.00	\$0.00	\$0.00	\$2.80	\$2.80	
State Match (HUTF)	\$0.00	\$0.00	\$0.00	\$0.00	\$0.00	\$0.70	\$0.70	
Total	\$0.00	\$0.00	\$0.00	\$0.00	\$0.00	\$3.50		\$3.50
I-25 Wellington Interchange Truck Parking							STIP Number: SR46600.101	
CFP Emphasis Area: Freight Safety, Freight Mobility, Truck Parking							CY Prioritized: 2021	
This funds the design for an addition of 20-50 truck parking spaces at the Wellington / I-25 Interchange. The exact number of spaces to be added will depend on ROW constraints, design configuration, and environmental considerations. CDOT’s Truck Parking Assessment implementation identifies this area as one of the state’s truck corridor segments with the highest shortfall of spaces.								
NHFP	\$0.00	\$0.00	\$0.00	\$0.00	\$0.00	\$0.40	\$0.40	
State Match (HUTF)	\$0.00	\$0.00	\$0.00	\$0.00	\$0.00	\$0.10	\$0.10	
Total	\$0.00	\$0.00	\$0.00	\$0.00	\$0.00	\$0.50		\$0.50
SH 71 Climbing Lanes							STIP Number: SR46600.068	
CFP Emphasis Area: Freight Safety							CY Prioritized: 2021	
This funds the design for the addition of climbing lanes at three select locations on this corridor that currently have no passing opportunities.								
NHFP	\$0.00	\$0.00	\$0.00	\$0.00	\$0.00	\$1.20	\$1.20	
State Match (HUTF)	\$0.00	\$0.00	\$0.00	\$0.00	\$0.00	\$0.30	\$0.30	
Total	\$0.00	\$0.00	\$0.00	\$0.00	\$0.00	\$1.50		\$1.50

On-System Bridge Ratings							STIP Number: TBD	
CFP Emphasis Area: Freight Safety, Freight Mobility							CY Prioritized: 2021	
Funding to accelerate the use of AASHTOWare Bridge Rating Program which will provide for more efficient freight routing and management by CDOT's Oversize/Overweight Permitting office.								
NHFP	\$0.00	\$0.00	\$0.00	\$0.00	\$0.00	\$2.10	\$2.10	
State Match (HUTF)	\$0.00	\$0.00	\$0.00	\$0.00	\$0.00	\$0.53	\$0.53	
Total	\$0.00	\$0.00	\$0.00	\$0.00	\$0.00	\$2.63		\$2.63
US 34 Weather Cameras							STIP Number: SR46600.100	
CFP Emphasis Area: Freight Safety, Freight Mobility, Truck Parking							CY Prioritized: 2021	
This project will install two CCV cameras and one Roadway Weather Information Stations (RWIS) providing truckers with real time information and video on a high truck use, high accident rate highway.								
NHFP	\$0.00	\$0.00	\$0.00	\$0.00	\$0.00	\$0.42	\$0.42	
State Match (HUTF)	\$0.00	\$0.00	\$0.00	\$0.00	\$0.00	\$0.10	\$0.10	
Total	\$0.00	\$0.00	\$0.00	\$0.00	\$0.00	\$0.52		\$0.52
Region 5 2022 Chain Station Improvements							STIP Number: SR56689.077	
CFP Emphasis Area: Freight Safety, Freight Mobility							CY Prioritized: 2021	
Improvement to three existing chain up and chain down stations, which include the lengthening and widening of stations and providing safety elements such as lighting. This will enhance the safety of these stations and meet the increased truck parking needs.								
NHFP	\$0.00	\$0.00	\$0.00	\$0.00	\$0.00	\$1.47	\$1.47	
State Match (HUTF)	\$0.00	\$0.00	\$0.00	\$0.00	\$0.00	\$0.37	\$0.37	
Total	\$0.00	\$0.00	\$0.00	\$0.00	\$0.00	\$1.84		\$1.84
I-70 EB Runaway Ramp							STIP Number: SR17002.101	
CFP Emphasis Area: Freight Safety							CY Prioritized: 2021	
Preconstruction funds for the Denver West runaway truck ramp in a location that experiences a severe, multi-fatality crash in 2019 and is a frequent site of trucks with overheated brakes.. This project provides trucks, with compromised brake ability, with a safe option to stop before entering the urban and congested areas.								
NHFP	\$0.00	\$0.00	\$0.00	\$0.00	\$0.00	\$0.40	\$0.40	
State Match (HUTF)	\$0.00	\$0.00	\$0.00	\$0.00	\$0.00	\$0.10	\$0.10	
Total	\$0.00	\$0.00	\$0.00	\$0.00	\$0.00	\$0.50		\$0.50
I-70 WB Climbing Lane - Bakerville to EJMT							STIP Number: SR10267.001	
CFP Emphasis Area: Freight Safety, Freight Mobility							CY Prioritized: 2021	
This project adds a WB climbing lane for slower moving trucks, improving safety for trucks and the motoring public, reduces congestion, and allows for greater mobility.								
NHFP	\$0.00	\$0.00	\$0.00	\$0.00	\$0.00	\$1.20	\$1.20	
State Match (HUTF)	\$0.00	\$0.00	\$0.00	\$0.00	\$0.00	\$0.30	\$0.30	
Total	\$0.00	\$0.00	\$0.00	\$0.00	\$0.00	\$1.50		\$1.50

FY2020 NHFP Projects

US 40/US 287 Passing Lanes - FY20 Continuation							STIP Number: SR46600.085	
CFP Emphasis Areas: Freight Safety, Freight Mobility							CY Prioritized: 2020	
Improve operations and safety on a section of US 40 and US 287 between Kit Carson and Hugo in Cheyenne & Lincoln Counties to add new passing lanes. The addition of passing lanes in strategic areas also provides additional roadway width to perform emergency avoidance maneuvers in the event a vehicle crosses the centerline. This project leverages prior NHFP funding and project development to add additional passing lanes.								
NHFP	\$0.00	\$0.00	\$0.00	\$0.00	\$1.60	\$0.00	\$1.60	
State Match (HUTF)	\$0.00	\$0.00	\$0.00	\$0.00	\$0.40	\$0.00	\$0.40	
Total	\$0.00	\$0.00	\$0.00	\$0.00	\$2.00	\$0.00		\$2.00

Wolf Creek Fiber West & ITS							STIP Number: SR56157.025	
CFP Emphasis Areas: Freight Safety, Freight Mobility							CY Prioritized: 2020	
This project will integrate connected vehicle technology with ITS to reduce the likelihood and severity of incidents on Wolf Creek Pass. Components of the project include installing fiber optic conduit and cable, installing power for ITS devices, friction sensors, variable speed limits, variable message signs, dual band connected vehicle roadside units, cameras, and a down hill truck warning system. These technologies will improve truck safety on Wolf Creek Pass.								
NHFP	\$0.00	\$0.00	\$0.00	\$0.00	\$0.32	\$0.00	\$0.32	
State Match (HUTF)	\$0.00	\$0.00	\$0.00	\$0.00	\$0.08	\$0.00	\$0.08	
Other Sources (ATMCD Grant)	\$0.00	\$0.00	\$13.75	\$0.00	\$0.00	\$0.00	\$13.75	
Total	\$0.00	\$0.00	\$13.75	\$0.00	\$0.40	\$0.00		\$14.15

I-25 South Monument Hill Climbing Lane - FY20 Continuation							STIP Number: SR13322.001	
CFP Emphasis Areas: Freight Safety, Freight Mobility							CY Prioritized: 2020	
The I-25 South Gap Project improves an 18-mile stretch of Interstate 25 from south of Castle Rock to Monument. The NHFP funded portion of this larger project will include widening a section an additional 12 feet in order to accommodate a truck climbing lane while maintaining the full 12 foot outside shoulder. The resulting improvement will create a single contiguous truck climbing lane for southbound I-25 from the Greenland exit extending to the existing exit lane into the Port of Entry.								
NHFP	\$0.00	\$0.00	\$0.00	\$0.00	\$6.40	\$0.00	\$6.40	
State Match (HUTF)	\$0.00	\$0.00	\$0.00	\$0.00	\$1.60	\$0.00	\$1.60	
Total	\$0.00	\$0.00	\$0.00	\$0.00	\$8.00	\$0.00		\$8.00

Project Description								
Funding Sources (\$ Millions)	FY16	FY17	FY18	FY19	FY20	FY21	Total	Total Project

FY2019 - FY2020 NHFP Projects

I-25 Southbound Chain-Up Station Improvements at Larkspur							STIP Number: SR13322.001	
CFP Emphasis Area: Freight Safety							CY Prioritized: 2019	
Improvements to the southbound rest area (currently closed at MP 171) that will make the area a chain-up station for trucks during inclement weather. This project includes lengthening the acceleration and deceleration lanes into the chain-up station, resurfacing the existing rest area lot and restriping to delineate the chain-up station areas, lighting and other safety features, and placing barrier or other means to ensure separation between the critical maintenance yard operations and chain-up area.								
NHFP	\$0.00	\$0.00	\$0.00	\$0.00	\$0.50	\$0.00	\$0.50	
State Match (HUTF)	\$0.00	\$0.00	\$0.00	\$0.00	\$0.15	\$0.00	\$0.15	
Total	\$0.00	\$0.00	\$0.00	\$0.00	\$0.65	\$0.00		\$0.65

Dynamic Speed Warning System I-70 Floyd Hill and Straight Creek Scoping							STIP Number: SST7079.001	
CFP Emphasis Area: Freight Safety							CY Prioritized: 2019	
The Dynamic Speed Warning System is a preventative warning system to alert commercial motor vehicle (CMV) drivers when they are traveling at an unsafe speed as they approach a steep decline. The system uses Weigh-in-Motion (WIM) technology along with speed radar to analyze how fast the CMV and its load are traveling. The proposed locations were chosen based on working with trucking industry stakeholders and employing sound engineering practices.								
NHFP	\$0.00	\$0.00	\$0.00	\$0.00	\$0.33	\$0.00	\$0.33	
State Match (HUTF)	\$0.00	\$0.00	\$0.00	\$0.00	\$0.07	\$0.00	\$0.07	
Total	\$0.00	\$0.00	\$0.00	\$0.00	\$0.40	\$0.00		\$0.40
North Kenosha Pass Chain Up Station							STIP Number: SR26867.101	
CFP Emphasis Area: Freight Safety							CY Prioritized: 2019	
Chain up station for CMV's heading south over Kenosha Pass (MP 207.8 to MP 208)								
NHFP	\$0.00	\$0.00	\$0.00	\$0.00	\$3.70	\$0.00	\$3.70	
State Match (HUTF)	\$0.00	\$0.00	\$0.00	\$0.00	\$0.80	\$0.00	\$0.80	
Total	\$0.00	\$0.00	\$0.00	\$0.00	\$4.50	\$0.00		\$4.50
State Highway 9 - South of Hoosier Pass							STIP Number: SR26867.102	
CFP Emphasis Area: Freight Safety							CY Prioritized: 2019	
Chain up station for CMV's heading north over Hoosier Pass.								
NHFP	\$0.00	\$0.00	\$0.00	\$0.00	\$3.70	\$0.00	\$3.70	
State Match (HUTF)	\$0.00	\$0.00	\$0.00	\$0.00	\$0.80	\$0.00	\$0.80	
Total	\$0.00	\$0.00	\$0.00	\$0.00	\$4.50	\$0.00		\$4.50
State Highway 9 - North of Hoosier Pass							STIP Number: SR26867.102	
CFP Emphasis Area: Freight Safety							CY Prioritized: 2019	
Chain up station for CMV's heading north over Hoosier Pass.								
NHFP	\$0.00	\$0.00	\$0.00	\$0.00	\$3.70	\$0.00	\$3.70	
State Match (HUTF)	\$0.00	\$0.00	\$0.00	\$0.00	\$0.80	\$0.00	\$0.80	
Total	\$0.00	\$0.00	\$0.00	\$0.00	\$4.50	\$0.00		\$4.50
I-25 Repair Structure P-18-BP							STIP Number: SR26867.100	
CFP Emphasis Area: Freight Mobility, Freight Safety							CY Prioritized: 2019	
Repair structure P-18-BP by injecting epoxy resin and fiber wrapping the appropriate areas in order to bring this structure's weight rating to a white rating and therefore allowing overweight loads to utilize this route once again.								
NHFP	\$0.00	\$0.00	\$0.00	\$0.00	\$0.98	\$0.00	\$0.98	
State Match (HUTF)	\$0.00	\$0.00	\$0.00	\$0.00	\$0.22	\$0.00	\$0.22	
Total	\$0.00	\$0.00	\$0.00	\$0.00	\$1.20	\$0.00		\$1.20

I-70 West Vail Pass Auxiliary Lanes - FY19 Continuation							STIP Number: SIN7021	
CFP Emphasis Area: Freight Safety, Freight Mobility, Truck Parking							CY Prioritized: 2019	
Addition of a climbing lane in the uphill (eastbound) direction and addition of a deceleration lane in the downhill (westbound) direction of I-70 West Vail Pass.								
NHFP	\$0.00	\$0.00	\$0.00	\$0.00	\$3.70	\$0.00	\$3.70	
State Match (HUTF)	\$0.00	\$0.00	\$0.00	\$0.00	\$0.80	\$0.00	\$0.80	
Total	\$0.00	\$0.00	\$0.00	\$0.00	\$4.50	\$0.00		\$4.50
U.S. 50: Little Blue Canyon							STIP Number: SR36607.003	
CFP Emphasis Area: Freight Safety, Freight Mobility							CY Prioritized: 2019	
Reconstruction and widening of U.S. 50 to improved geometric design standards and other safety, drainage, and access improvements. Includes passing lanes, shoulders, and mitigation of a landslide.								
NHFP	\$0.00	\$0.00	\$0.00	\$0.00	\$0.46	\$0.00	\$0.46	
State Match (HUTF)	\$0.00	\$0.00	\$0.00	\$0.00	\$0.10	\$0.00	\$0.10	
Total	\$0.00	\$0.00	\$0.00	\$0.00	\$0.56	\$0.00		\$0.56
I-70 EJMT - Trailer Snow Removal System							STIP Number: SST7079.002	
CFP Emphasis Area: Freight Mobility, Freight Safety							CY Prioritized: 2019	
Purchase and install a snow removal system designed to safely remove snow that has built up on the top of trailers.								
NHFP	\$0.00	\$0.00	\$0.00	\$0.00	\$0.24	\$0.00	\$0.24	
State Match (HUTF)	\$0.00	\$0.00	\$0.00	\$0.00	\$0.06	\$0.00	\$0.06	
Total	\$0.00	\$0.00	\$0.00	\$0.00	\$0.30	\$0.00		\$0.30
Passing Lanes on US 40/US 287 - FY19 Continuation ⁽¹⁾							STIP Number: SR46606.085	
CFP Emphasis Area: Freight Mobility, Freight Safety							CY Prioritized: 2019	
This project will strategically add new passing lanes and extend existing passing lanes at critical locations along US 40 and US 287.								
NHFP	\$0.00	\$0.00	\$0.00	\$0.00	\$3.70	\$0.00	\$3.70	
State Match (HUTF)	\$0.00	\$0.00	\$0.00	\$0.00	\$0.80	\$0.00	\$0.80	
Total	\$0.00	\$0.00	\$0.00	\$0.00	\$4.50	\$0.00	\$4.50	\$4.50
(1) Within the approved May 2020 FIP, NHFP funding totals for this project were incorrect. The November 2020 administrative update corrects this error.								
Mountain Pass Chain Up Stations and Safety Needs, Region 5 - FY19 Continuation							STIP Number: SR56689.069	
CFP Emphasis Area: Freight Safety							CY Prioritized: 2019	
The FY 19 and FY 20 Chain Station Improvement Project will provide adequate lighting and space for trucks to pull over and for drivers to chain up safely. Construction improvements will include installation of new LED lighting on both sides of the vehicles, signing and striping, as well as the installation of variable message signs on mountain passes. Some locations will also be lengthened and widened, including paving, in order to accommodate more trucks. Widening and lighting of the chain up stations will increase the buffer between the trucks and live lanes of traffic.								
NHFP	\$0.00	\$0.00	\$0.00	\$0.00	\$3.70	\$0.00	\$3.70	
State Match (HUTF)	\$0.00	\$0.00	\$0.00	\$0.00	\$0.80	\$0.00	\$0.80	
Total	\$0.00	\$0.00	\$0.00	\$0.00	\$4.50	\$0.00		\$4.50

US 160 and State Highway 17 Intersection Improvement Project							STIP Number: SR56689.037	
CFP Emphasis Area: Freight Safety, Freight Mobility							CY Prioritized: 2019	
This project is located at the intersection of US Hwy 160 and State Hwy 17 on the east side of Alamosa. The project includes: • signalization of the congested intersection to accommodate freight mobility from SH 17 to US 160 east and widening SH 17 to increase the length of the through/left turn lane which allows for more truck storage before the right turn lane is blocked by traffic. The project will also reconfigure the existing traffic islands to improve the turning radius for freight and reconstruct with concrete pavement to prevent rutting due to the high volume of heavy freight.								
NHFP	\$0.00	\$0.00	\$0.00	\$0.00	\$1.23	\$0.00	\$1.23	
State Match (HUTF)	\$0.00	\$0.00	\$0.00	\$0.00	\$0.27	\$0.00	\$0.27	
Total	\$0.00	\$0.00	\$0.00	\$0.00	\$1.50	\$0.00		\$1.50
Truck Specialized Parking Services Maintenance and Monitoring							STIP Number: SST7079.003	
CFP Emphasis Area: Truck Parking, Freight Safety							CY Prioritized: 2019	
Fund a new annual maintenance and monitoring contract with Truck Specialized Parking Services (TSPS).								
NHFP	\$0.00	\$0.00	\$0.00	\$0.00	\$0.19	\$0.00	\$0.19	
State Match (HUTF)	\$0.00	\$0.00	\$0.00	\$0.00	\$0.04	\$0.00	\$0.04	
Total	\$0.00	\$0.00	\$0.00	\$0.00	\$0.23	\$0.00		\$0.23
I-70 Truck Parking Information Management System							STIP Number: SST7079.004	
CFP Emphasis Area: Truck Parking, Freight Safety							CY Prioritized: 2019	
Implement TPIMS program to expand from four existing public truck parking facilities along I-70 east of Glenwood Springs to full capacity (roughly 72 sites) with annual maintenance and monitoring fees remaining the same, after hardware purchases for additional sites occur. The existing four sites are CDOT’s No Name Rest Area, CDOT’s Grizzly Creek Rest Area, CDOT’s Bair Ranch Rest Area, and CDOT’s Dotsero Truck Parking Facility.								
NHFP	\$0.00	\$0.00	\$0.00	\$0.00	\$0.80	\$0.00	\$0.80	
State Match (HUTF)	\$0.00	\$0.00	\$0.00	\$0.00	\$0.18	\$0.00	\$0.18	
Total	\$0.00	\$0.00	\$0.00	\$0.00	\$0.98	\$0.00		\$0.98
FY2018 NHFP Projects								
I-25 South Monument Hill Climbing Lane							STIP Number: SR13322.001	
CFP Emphasis Areas: Freight Mobility, Freight Safety							CY Prioritized: 2018	
Construction of a climbing lane at Monument Hill south of Greenland. One and a half mile climbing lane in the southbound direction from approximately.								
NHFP	\$0.00	\$0.00	\$2.00	\$0.00	\$0.00	\$0.00	\$2.00	
State Match (HUTF)	\$0.00	\$0.00	\$0.50	\$0.00	\$0.00	\$0.00	\$0.50	
Total	\$0.00	\$0.00	\$2.50	\$0.00	\$0.00	\$0.00		\$2.50
I-70 Garfield County Truck Parking - FY18 Continuation							STIP Number: SR37014.001	
CFP Emphasis Areas: Truck Parking, Freight Safety, Freight Mobility							CY Prioritized: 2018	
Construction of up to four truck parking locations along I-70 in Garfield County in the vicinity of Glenwood Springs. Two locations are on mainline I-70 and two locations are anticipated to be located along US 6 between I-70 Exits 114 and 116.								
NHFP	\$0.00	\$0.00	\$1.30	\$0.00	\$0.00	\$0.00	\$1.30	
State Match (HUTF)	\$0.00	\$0.00	\$0.33	\$0.00	\$0.00	\$0.00	\$0.33	
Total	\$0.00	\$0.00	\$1.63	\$0.00	\$0.00	\$0.00		\$1.63

US 287 Passing Lane South of Lamar							STIP Number: SR26867.064	
CFP Emphasis Areas: Freight Safety, Freight Mobility							CY Prioritized: 2018	
Construction of a passing lane over several miles that experience a high number of truck-related crashes.								
NHFP	\$0.00	\$0.00	\$3.60	\$0.00	\$0.00	\$0.00	\$3.60	
State Match (HUTF)	\$0.00	\$0.00	\$0.90	\$0.00	\$0.00	\$0.00	\$0.90	
FASTER Safety (State)	\$0.00	\$0.00	\$1.50	\$0.00	\$0.00	\$0.00	\$1.50	
Total	\$0.00	\$0.00	\$6.00	\$0.00	\$0.00	\$0.00		\$6.00
US 40/US 287 Passing Lanes - FY18 Continuation							STIP Number: SR46600.085	
CFP Emphasis Areas: Freight Safety, Freight Mobility							CY Prioritized: 2018	
Evaluate the operations and safety on a section of US 40 and US 287 to strategically add new passing lanes at several locations. Some existing passing lanes will be extended. In addition, this project will address the safety components.								
NHFP	\$0.00	\$0.00	\$3.60	\$0.00	\$0.00	\$0.00	\$3.60	
State Match (HUTF)	\$0.00	\$0.00	\$0.90	\$0.00	\$0.00	\$0.00	\$0.90	
Total	\$0.00	\$0.00	\$4.50	\$0.00	\$0.00	\$0.00		\$4.50
Sleeping Ute Truck Parking - Region 5							STIP Number: SR56689.073	
CFP Emphasis Areas: Truck Parking, Freight Safety, Freight Mobility							CY Prioritized: 2018	
Expand the Sleeping Ute truck parking from 2 to 6 spaces and expand the Shaw Creek truck parking from 4 to 10 spaces. Shaw Creek gets additional usage when Wolf Creek Pass closes. Includes LED lighting improvements.								
NHFP	\$0.00	\$0.00	\$1.78	\$0.00	\$0.00	\$0.00	\$1.78	
State Match (HUTF)	\$0.00	\$0.00	\$0.44	\$0.00	\$0.00	\$0.00	\$0.44	
Total	\$0.00	\$0.00	\$2.22	\$0.00	\$0.00	\$0.00		\$2.22
Mountain Pass Chain Up Stations and Safety Needs, Region 5 - FY18 Continuation							STIP Number: SR56689.069	
CFP Emphasis Areas: Freight Safety							CY Prioritized: 2018	
Safety improvements consist of lengthening and widening chain-up stations to improve capacity and add a buffer between live traffic. LED lighting will be added to both sides of the truck parking location. Sub-standard road closure gates will be replaced with gates that meet federal standards.								
NHFP	\$0.00	\$0.00	\$1.92	\$0.00	\$0.00	\$0.00	\$1.92	
State Match (HUTF)	\$0.00	\$0.00	\$0.48	\$0.00	\$0.00	\$0.00	\$0.48	
Total	\$0.00	\$0.00	\$2.40	\$0.00	\$0.00	\$0.00		\$2.40
FY2017 NHFP Projects								
I-25:City Center Drive to 29th Street							STIP: SPB3865	
CFP Emphasis Areas: Freight Mobility, Truck Safety							CY Prioritized: 2017	
New Pueblo Freeway improvements in Pueblo to the north of City Center Drive, including complete reconstruction and widening of I 25 between 29th Street and City Center Drive, construction of a split-diamond interchange, additional exit ramps near 6th Street, and construction of a one-way frontage road between ramps. Upgrades to current design standards will address freight mobility and safety issues, including a commercial vehicle crash hot spot. NHFP will supplement other funding sources and support preconstruction activities for possible future advancement as an urban INFRA grant.								
NHFP	\$0.80	\$0.80	\$0.00	\$0.00	\$0.00	\$0.00	\$1.60	
State Match (HUTF)	\$0.20	\$0.20	\$0.00	\$0.00	\$0.00	\$0.00	\$0.40	
Total	\$1.00	\$1.00	\$0.00	\$0.00	\$0.00	\$0.00		\$2.00

I-25: Valley Highway Phase 3.0: Santa Fe to Bronco Arc							STIP: SR16719.028	
CFP Emphasis Areas: Freight Mobility, Truck Safety							CY Prioritized: 2017	
Replacement of low-vertical clearance bridges at 23 rd and Speer, interchanges, and roadway widening. NHFP will supplement other sources and support Planning and Environmental Linkages study to include consideration of low-vertical clearance bridges, which are a significant impediment to freight movement and are frequently hit.								
NHFP	\$0.40	\$0.40	\$0.00	\$0.00	\$0.00	\$0.00	\$0.80	
State Match (HUTF)	\$0.10	\$0.10	\$0.00	\$0.00	\$0.00	\$0.00	\$0.20	
Other State/Federal (RPP)	\$0.00	\$0.00	\$1.50	\$0.00	\$0.00	\$0.00	\$1.50	
Total	\$0.50	\$0.50	\$1.50	\$0.00	\$0.00	\$0.00		\$2.50
I-70 West: Vail Pass Auxiliary Lanes							STIP Number: SR36607.028	
CFP Emphasis Areas: Freight Mobility							CY Prioritized: 2017	
Addition of auxiliary lanes on Vail Pass to accommodate slow-moving commercial vehicles and alleviate substantial speed differentials causing lane changes, back-ups, and crashes. NHFP will supplement other funding sources and support preconstruction activities for possible future advancement as a rural INFRA grant.								
NHFP	\$0.80	\$0.80	\$0.00	\$0.00	\$0.00	\$0.00	\$1.60	
State Match (HUTF)	\$0.20	\$0.20	\$0.00	\$0.00	\$0.00	\$0.00	\$0.40	
Total	\$1.00	\$1.00	\$0.00	\$0.00	\$0.00	\$0.00		\$2.00
I-70 Garfield County Truck Parking							STIP Number: SR36607.016	
CFP Emphasis Areas: Truck Parking, Truck Safety							CY Prioritized: 2017	
Development of up to four truck parking locations along I-70 in the vicinity of Glenwood Springs.								
NHFP	\$0.80	\$0.80	\$0.00	\$0.00	\$0.00	\$0.00	\$1.60	
State Match (HUTF)	\$0.20	\$0.20	\$0.00	\$0.00	\$0.00	\$0.00	\$0.40	
Total	\$1.00	\$1.00	\$0.00	\$0.00	\$0.00	\$0.00		\$2.00
U.S. 50: Little Blue Canyon							STIP Number: SR36607.003	
CFP Emphasis Areas: Truck Safety, Freight Mobility							CY Prioritized: 2017	
Reconstruction and widening of U.S. 50 to improved geometric design standards and other safety, drainage, and access improvements. Includes passing lanes, shoulders, and mitigation of a landslide. NHFP will complete a larger construction funding package, providing for freight-related elements, including shoulders and safety improvements. Important connection for freight movement with safety and mobility issues, including a commercial vehicle crash hot spot.								
NHFP	\$0.80	\$0.80	\$0.00	\$0.00	\$0.00	\$0.00	\$1.60	
State Match (HUTF)	\$0.20	\$0.20	\$0.00	\$0.00	\$0.00	\$0.00	\$0.40	
Other State/Federal (RPP)	\$0.00	\$0.00	\$1.50	\$0.80	\$0.90	\$0.00	\$3.20	
Other State/Federal (TBD)	\$0.00	\$0.00	\$0.00	\$3.50	\$0.00	\$0.00	\$3.50	
Other State (FASTER Safety)	\$0.00	\$0.00	\$1.80	\$0.00	\$0.00	\$0.00	\$1.80	
Other Federal (FLAP)	\$0.00	\$0.00	\$0.00	\$18.00	\$0.00	\$0.00	\$18.00	
Total	\$1.00	\$1.00	\$3.30	\$22.30	\$0.90	\$0.00		\$28.50

U.S. 85: Louviers to Meadows Widening							STIP Number: SR16719.030	
CFP Emphasis Areas: Truck Safety, Freight Mobility							CY Prioritized: 2017	
Reconstruction of two-lane roadway to four lanes with a divided median and acceleration/deceleration lanes. NHFP will complete a larger construction funding package, providing for freight-related elements, including widened paved shoulders. Corridor includes a commercial vehicle crash hot spot, serves an industrial area, including a railroad auto transfer facility, and serves as an alternative to I-25 between Denver and Castle Rock.								
NHFP	\$2.44	\$2.44	\$0.00	\$0.00	\$0.00	\$0.00	\$4.88	
State Match (HUTF)	\$0.61	\$0.61	\$0.00	\$0.00	\$0.00	\$0.00	\$1.22	
Other State/Federal (RPP)	\$0.00	\$0.00	\$11.80	\$3.50	\$0.00	\$0.00	\$15.30	
Total	\$3.05	\$3.05	\$11.80	\$3.50	\$0.00	\$0.00		\$21.40
U.S. 85/Vasquez: I-270 to 62 nd Avenue Interchange							STIP Number: SR16720.999	
CFP Emphasis Areas: Truck Safety, Freight Mobility							CY Prioritized: 2017	
Reconstruction of interchange at I-270 and intersections at 56 th , 60 th , and 62 nd Avenues to improve safety and capacity, adding grade separation, and improving access points. NHFP will supplement other funding sources and support preconstruction activities. Important freight, energy, and industrial corridor with significant safety, geometric and mobility issues affecting freight movement, including a commercial vehicle crash hot spot.								
NHFP	\$1.60	\$1.60	\$0.00	\$0.00	\$0.00	\$0.00	\$3.20	
State Match (HUTF)	\$0.40	\$0.40	\$0.00	\$0.00	\$0.00	\$0.00	\$0.80	
Other State/Federal (Region Design)	\$0.00	\$0.00	\$1.75	\$0.00	\$0.00	\$0.00	\$1.75	
Total	\$2.00	\$2.00	\$1.75	\$0.00	\$0.00	\$0.00		\$5.75
U.S. 85: Corridor Improvements							STIP Number: SR46600.031	
CFP Emphasis Areas: Freight Mobility, Safety							CY Prioritized: 2017	
Safety, intersection, and interchange improvements on important freight and rail corridor. NHFP will supplement other construction funding sources and support freight-related elements, including improvements identified in U.S. 85 Corridor INFRA grant application.								
NHFP	\$0.80	\$0.80	\$0.00	\$0.00	\$0.00	\$0.00	\$1.60	
State Match (HUTF)	\$0.20	\$0.20	\$0.00	\$0.00	\$0.00	\$0.00	\$0.40	
Other State/Federal (TBD)	\$0.00	\$0.00	\$42.00	\$16.50	\$16.50	\$0.00	\$75.00	
Total	\$1.00	\$1.00	\$42.00	\$16.50	\$16.50	\$0.00		\$77.00
U.S. 160 Wolf Creek Safety Improvements							STIP Number: SR56689.068	
CFP Emphasis Areas: Truck Safety							CY Prioritized: 2017	
Safety improvements based on U.S. 160 Wolf Creek Pass Safety Audit, including improvements to road curvature, rumble strips, shoulder widening in pull-out locations, addition of crash barrier, highway restriping, informational signing, and Variable Message Signs targeting freight traffic.								
NHFP	\$0.64	\$0.64	\$0.00	\$0.00	\$0.00	\$0.00	\$1.28	
State Match (HUTF)	\$0.16	\$0.16	\$0.00	\$0.00	\$0.00	\$0.00	\$0.32	
Total	\$0.80	\$0.80	\$0.00	\$0.00	\$0.00	\$0.00		\$1.60

U.S. 287:Lamar Reliever Route							STIP Number: SR26867.082	
CFP Emphasis Areas: Freight Mobility							CY Prioritized: 2017	
Realignment of U.S. 50 to the south, new U.S. 50/U.S. 287 interchange, and realignment of U.S. 287 to new reliever route. NHFP will supplement other funding sources and support preconstruction activities on U.S. 287 realignment for possible future advancement as a rural INFRA grant.								
NHFP	\$0.40	\$0.40	\$0.00	\$0.00	\$0.00	\$0.00	\$0.80	
State Match (HUTF)	\$0.10	\$0.10	\$0.00	\$0.00	\$0.00	\$0.00	\$0.20	
Total	\$0.50	\$0.50	\$0.00	\$0.00	\$0.00	\$0.00		\$1.00
SH 14: Sterling "S" Curve							STIP Number: SR46606.045	
CFP Emphasis Areas: Freight Mobility							CY Prioritized: 2017	
Realignment of SH 14 to an “S” curve alignment in order to connect I-76 while eliminating 90 degree turns, which are difficult for trucks to navigate. NHFP funding will complete a larger construction funding package.								
NHFP	\$3.95	\$2.05	\$0.00	\$0.00	\$0.00	\$0.00	\$6.00	
State Match (HUTF)	\$0.99	\$0.51	\$0.00	\$0.00	\$0.00	\$0.00	\$1.50	
Other State (FASTER Safety)	\$0.00	\$0.00	\$0.55	\$2.00	\$0.00	\$0.00	\$2.55	
Other State/Federal (ST Treatment)	\$0.00	\$0.00	\$1.00	\$0.00	\$0.00	\$0.00	\$1.00	
Other State/Federal (RPP)	\$0.00	\$0.00	\$0.00	\$3.24	\$0.00	\$0.00	\$3.24	
Total	\$4.94	\$2.56	\$1.55	\$5.24	\$0.00	\$0.00		\$14.29
Mountain Pass Chain Up Stations and Safety Needs - Region 5							STIP Number: SR56689.069	
CFP Emphasis Areas: Truck Safety							CY Prioritized: 2017	
Lengthening and widening of chain up stations to improve capacity and addition of a safety buffer between live traffic, addition of overhead LED lighting, and replacement of substandard road closure gates.								
NHFP	\$1.02	\$1.02	\$0.00	\$0.00	\$0.00	\$0.00	\$2.04	
State Match (HUTF)	\$0.26	\$0.26	\$0.00	\$0.00	\$0.00	\$0.00	\$0.52	
Total	\$1.28	\$1.28	\$0.00	\$0.00	\$0.00	\$0.00		\$2.55
Port-of-Entry Mobile Site Pullout Improvements							STIP Number: SST7079.005	
CFP Emphasis Areas: Truck Safety, Truck Parking							CY Prioritized: 2017	
Improvements to highway pullouts used by Colorado State Patrol (CSP) as Port of Entry (POE) Mobile Sites and identified as high priorities for improvements, including leveling, paving, barrier separation and other improvements. CSP has identified 14 high priority POE mobile sites in need of improvement.								
NHFP	\$0.00	\$0.32	\$0.48	\$0.00	\$0.00	\$0.00	\$0.80	
State Match (HUTF)	\$0.00	\$0.08	\$0.12	\$0.00	\$0.00	\$0.00	\$0.20	
Total	\$0.00	\$0.40	\$0.60	\$0.00	\$0.00	\$0.00		\$1.00
Truck Parking Information Management System (TPIMS)							STIP Number: SST7003.126	
CFP Emphasis Areas: Truck Parking, Truck Safety							CY Prioritized: 2017	
Development of TPIMS to monitor availability of truck parking at locations where deployed and provide notification to drivers via in-dash communications or roadside signs. NHFP will supplement existing project and provide for expanded deployment to additional locations.								
NHFP	\$0.00	\$0.68	\$0.12	\$0.00	\$0.00	\$0.00	\$0.80	
State Match (HUTF)	\$0.00	\$0.17	\$0.03	\$0.00	\$0.00	\$0.00	\$0.20	
Other State/Federal	\$0.80	\$0.00	\$0.00	\$0.00	\$0.00	\$0.00	\$0.80	
Total	\$0.80	\$0.85	\$0.15	\$0.00	\$0.00	\$0.00		\$1.80

TOTAL FREIGHT INVESTMENT PLAN

	FY16	FY17	FY18	FY19 *	FY20	FY21	Total
Total Colorado FIP NHFP	\$14.45	\$13.55	\$14.80	\$0.00	\$35.25	\$18.79	\$96.84
<i>Colorado NHFP Apportionment Constraint</i>	<i>\$15.54</i>	<i>\$14.77</i>	<i>\$16.14</i>	<i>\$18.22</i>	<i>\$20.17</i>	<i>\$20.27</i>	<i>\$105.11</i>
Total State Match (HUTF)	\$3.62	\$3.39	\$3.70	\$0.00	\$7.97	\$4.70	\$23.38
Total Other State/Federal	\$0.80	\$0.00	\$77.15	\$47.54	\$17.40	\$0.00	\$142.89
TOTAL NHFP (NHFP + HUTF)	\$18.07	\$15.84	\$18.32	\$0.00	\$41.00	\$23.33	\$120.22

* CDOT issued a combined call for projects for FY19 and FY20